

m o o o i

# Monster Barstool

MARCEL WANDERS



A soft, puffy and stylish barstool as symbol of the eternal battle between opposite forces that take place in life and can be easily recognized inside ourselves, if we have the courage to open our eyes. Scary? Not at all! You forget all about the monster once you sit down and enjoy the barstool's comfort and softness.

---

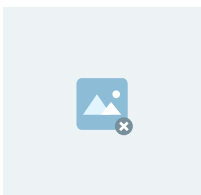
## *Detailing*



The long legs of the Monster Barstool provide an endlessly elegant yet monstrous appearance. Sit down, if you dare!

---

## *Colours*



Black

CAT 1

## Monster Barstool / Diamond High

### Dimensions

41cm | 16.1"



51cm | 20.1"



76cm | 29.9"



103cm | 40.55"

### Product

**WIDTH** 41cm | 16.1"

**HEIGHT** 103cm | 40.6"

**DEPTH** 51cm | 20.1"

### Packaging

**WIDTH** 51cm | 20.1"

**HEIGHT** 108cm | 42.5"

**CUBAGE** 0.33m<sup>3</sup> | 11.67ft<sup>3</sup>

**LENGTH** 60cm | 23.6"

**WEIGHT** 15kg | 33.07lbs

### Technical

#### MATERIAL

Steel frame, foam.

#### SEAT DEPTH

39cm | 15.4"

#### SEAT HEIGHT

81cm | 31.9"

#### SEAT WIDTH

42cm | 16.5"

## Monster Barstool / Diamond Low

### Dimensions

41cm | 16.1"



51cm | 20.1"



66cm | 25.98"



93cm | 36.61"

### Product

**WIDTH** 41cm | 16.1"

**HEIGHT** 93cm | 36.6"

**DEPTH** 51cm | 20.1"

### Packaging

**WIDTH** 51cm | 20.1"

**HEIGHT** 102cm | 40.2"

**CUBAGE** 0.31m<sup>3</sup> | 11.02ft<sup>3</sup>

**LENGTH** 60cm | 23.6"

**WEIGHT** 13kg | 28.66lbs

### Technical

**MATERIAL**

Steel frame, foam.

**SEAT DEPTH**

39cm | 15.4"

**SEAT HEIGHT**

66cm | 26"

**SEAT WIDTH**

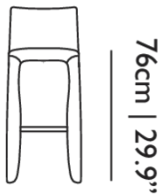
42cm | 16.5"

---

## Monster Barstool / Naked High

### Dimensions

41cm | 16.1"



### Product

**WIDTH** 41cm | 16.1"

**HEIGHT** 103cm | 40.6"

**DEPTH** 51cm | 20.1"

### Packaging

**WIDTH** 51cm | 20.1"

**HEIGHT** 108cm | 42.5"

**CUBAGE** 0.33m<sup>3</sup> | 11.67ft<sup>3</sup>

**LENGTH** 60cm | 23.6"

**WEIGHT** 15kg | 33.07lbs

---

### Technical

**MATERIAL**

Steel frame, foam.

**SEAT DEPTH**

39cm | 15.4"

**SEAT HEIGHT**

81cm | 31.9"

**SEAT WIDTH**

42cm | 16.5"

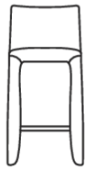
# Monster Barstool / Naked Low

## Dimensions

41cm | 16.1"



51cm | 20.1"



66cm | 25.98"



93cm | 36.61"

## Product

**WIDTH** 41cm | 16.1"

**HEIGHT** 93cm | 36.6"

**DEPTH** 51cm | 20.1"

## Packaging

**WIDTH** 51cm | 20.1"

**HEIGHT** 108cm | 42.5"

**CUBAGE** 0.33m<sup>3</sup> | 11.67ft<sup>3</sup>

**LENGTH** 60cm | 23.6"

**WEIGHT** 13kg | 28.66lbs

## Technical

### MATERIAL

Steel frame, foam.

### SEAT DEPTH

39cm | 15.4"

### SEAT HEIGHT

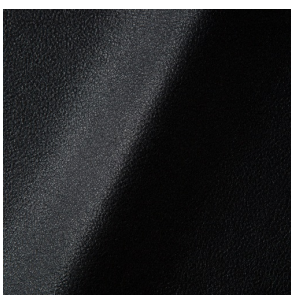
66cm | 26"

### SEAT WIDTH

42cm | 16.5"

## Upholstery

*ABBRACCI (available in 5 colours)*



### COMPOSITION

100% PES

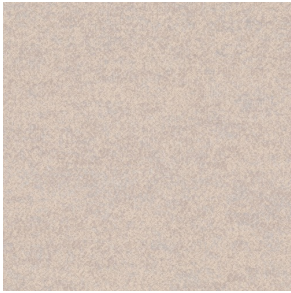
### ABRASION

30000 martindale  
lightfastness 3 - 4  
pilling 5

### FIRE RESISTANCE

BS 5852 - Ignition source  
0 (Cigarette)  
BS 5852 - Ignition source  
1 (Match flame equivalent)  
EN 1021-1 (Cigarette)  
EN 1021-2 (Match)  
TB 117-2013

*ARDA (available in 12 colours)*



**ABRASION**

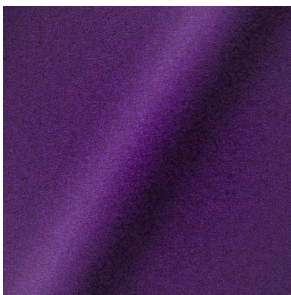
50000 martindale  
lightfastness 5 - 6  
pilling 4 - 5

**FIRE RESISTANCE**

BS 5852 - Ignition source  
0 (Cigarette)  
BS 5852 - Ignition source  
5 (Crib 5)  
BS 5852 - Ignition source  
1 (Match flame equivalent)  
EN 1021-1 (Cigarette)  
EN 1021-2 (Match)  
TB 117-2013  
EU Ecolabel

---

*DIVINA 3 (available in 56 colours)*



**COMPOSITION**

100% WO

**ABRASION**

45000 martindale  
lightfastness 7  
pilling 3

**FIRE RESISTANCE**

BS 5852 - Ignition source  
0 (Cigarette)  
BS 5852 - Ignition source  
5 (Crib 5)  
BS 5852 - Ignition source  
1 (Match flame equivalent)  
EN 1021-1 (Cigarette)  
EN 1021-2 (Match)  
TB 117-2013  
EU Ecolabel

---

*DIVINA MD (available in 27 colours)*



**COMPOSITION**

100% WO

**ABRASION**

45000 martindale  
lightfastness 6  
pilling 3

**FIRE RESISTANCE**

BS 5852 - Ignition source  
0 (Cigarette)  
BS 5852 - Ignition source  
5 (Crib 5)  
BS 5852 - Ignition source  
1 (Match flame equivalent)  
EN 1021-1 (Cigarette)  
EN 1021-2 (Match)  
EU Ecolabel

*DIVINA MELANGE 3 (available in 49 colours)*



**COMPOSITION**

100% WO

**ABRASION**

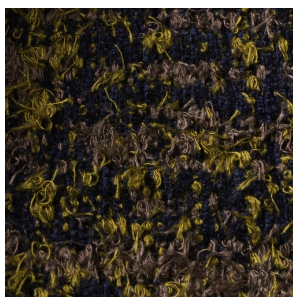
45000 martindale  
lightfastness 6 - 7  
pilling 3

**FIRE RESISTANCE**

BS 5852 - Ignition source  
0 (Cigarette)  
BS 5852 - Ignition source  
5 (Crib 5)  
BS 5852 - Ignition source  
1 (Match flame equivalent)  
EN 1021-1 (Cigarette)  
EN 1021-2 (Match)  
TB 117-2013  
EU Ecolabel

---

*Bearded Leopard (available in 3 colours)*



**COMPOSITION**

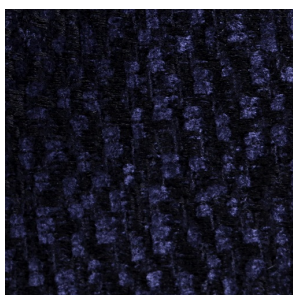
77% CV, 15% PES, 7% CO,  
1% PA

**ABRASION**

15000 martindale  
lightfastness 4 - 6  
pilling 4

---

*Calligraphy Bird (available in 4 colours)*



**COMPOSITION**

64% CV, 21% PES, 15%  
CO

**ABRASION**

50000 martindale  
lightfastness 4 - 6  
pilling 5

---

*Blushing Sloth Melange Mohair (available in 1 colours)*



**COMPOSITION**

85% WV, 15% WM

**ABRASION**

15000 martindale  
lightfastness 4 - 6  
pilling 2 - 3

---

*Blushing Sloth Woolly Mohair (available in 1 colours)*



**COMPOSITION**

24% PES, 15% PA, 8% CO,  
24% WM, 29% WV

**ABRASION**

40000 martindale  
lightfastness 4 - 6  
pilling 3 - 4

---

*FIORD (available in 39 colours)*



**COMPOSITION**

92% WV, 8% PA

**ABRASION**

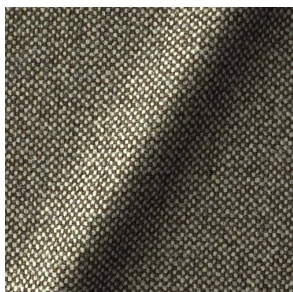
60000 martindale  
lightfastness 6  
pilling 4 - 5

**FIRE RESISTANCE**

EN 1021-1 (Cigarette)  
EN 1021-2 (Match)  
BS 5852 - Ignition source  
0 (Cigarette)  
BS 5852 - Ignition source  
1 (Match flame equivalent)

---

*HALLINGDAL 65 (available in 58 colours)*



**COMPOSITION**

30% CV, 70% WV

**ABRASION**

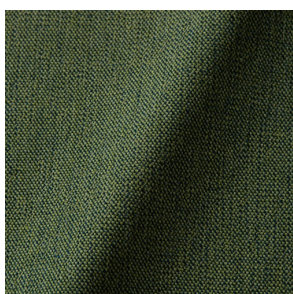
100000 martindale  
lightfastness 7  
pilling 3 - 4

**FIRE RESISTANCE**

BS 5852 - Ignition source  
0 (Cigarette)  
BS 5852 - Ignition source  
5 (Crib 5)  
BS 5852 - Ignition source  
1 (Match flame equivalent)  
EN 1021-1 (Cigarette)  
EN 1021-2 (Match)  
TB 117-2013  
EU Ecolabel

---

*JUSTO (available in 10 colours)*



**COMPOSITION**

15% CO, 35% PC, 10% PA,  
40% CV

**ABRASION**

50000 martindale  
lightfastness 5  
pilling 4

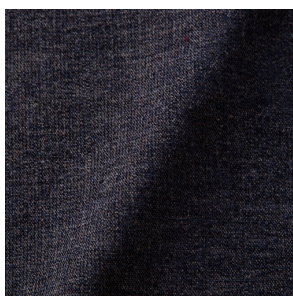
**FIRE RESISTANCE**

EN 1021-1 (Cigarette)  
EN 1021-2 (Match)  
TB 117-2013



---

*LISCIO (available in 11 colours)*



**COMPOSITION**

35% WO, 35% CV, 21%  
CO, 9% PA

**ABRASION**

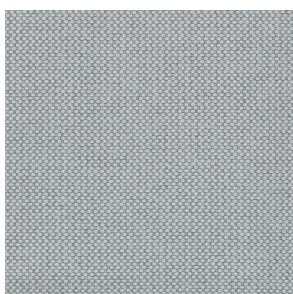
30000 martindale  
lightfastness 4 - 6  
pilling 4

**FIRE RESISTANCE**

TB 117-2013

---

*MERIT (available in 43 colours)*



**COMPOSITION**

24% PES, 76%

**ABRASION**

85000 martindale  
lightfastness 7  
pilling 4

---

*ORAY RAY (available in 15 colours)*

**COMPOSITION**

39% LI, 38% CV, 15% PE,  
8% CO

**ABRASION**

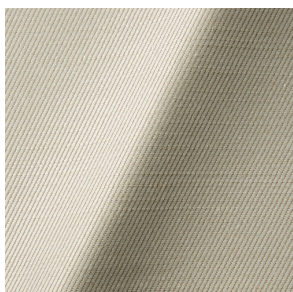
30000 martindale  
pilling 4 - 5

**FIRE RESISTANCE**

BS 5852 - Ignition source  
0 (Cigarette)  
BS 5852 - Ignition source  
1 (Match flame equivalent)  
TB 117-2013

---

*ORAY RONAN (available in 5 colours)*



**COMPOSITION**

39% LI, 38% CV, 15% PE,  
8% CO

**ABRASION**

30000 martindale  
pilling 4 - 5

**FIRE RESISTANCE**

BS 5852 - Ignition source  
0 (Cigarette)  
BS 5852 - Ignition source  
1 (Match flame equivalent)  
TB 117-2013

---



*PALETTE (available in 24 colours)*



**COMPOSITION**

42% CO, 29% WO, 29%  
TL

**ABRASION**

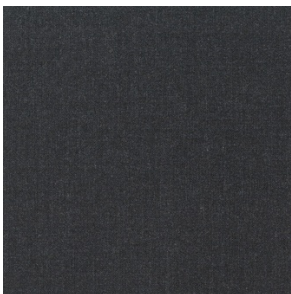
45000 martindale  
lightfastness 4 - 5  
pilling 3 - 3

**FIRE RESISTANCE**

BS 5852 - Ignition source  
0 (Cigarette)  
TB 117-2013  
BS 5852 - Ignition source  
5 (Crib 5)

---

*REMIX 3 (available in 53 colours)*



**COMPOSITION**

10% PA, 90% WV

**ABRASION**

100000 martindale  
lightfastness 5  
pilling 4

*SOLIS (available in 9 colours)*



**COMPOSITION**

60% WO, 30% PES, 2%  
PA, 3% PC

**ABRASION**

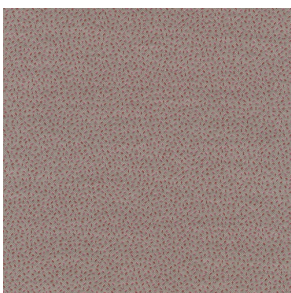
40000 martindale  
lightfastness 5  
pilling 3 - 4

**FIRE RESISTANCE**

EN 1021-1 (Cigarette)  
EN 1021-2 (Match)  
TB 117-2013

---

*SPRINKLES (available in 23 colours)*



**ABRASION**

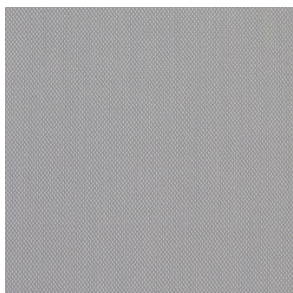
80000 martindale  
lightfastness 7  
pilling 4

**FIRE RESISTANCE**

EU Ecolabel  
BS 5852 - Ignition source  
0 (Cigarette)  
BS 5852 - Ignition source  
5 (Crib 5)  
BS 5852 - Ignition source  
1 (Match flame equivalent)  
EN 1021-1 (Cigarette)  
EN 1021-2 (Match)  
TB 117-2013

---

*STEELCUT TRIO 3 (available in 54 colours)*



**COMPOSITION**

90% WV, 10% PA

**ABRASION**

100000 martindale  
lightfastness 5  
pilling 4

**FIRE RESISTANCE**

BS 5852 - Ignition source  
0 (Cigarette)  
BS 5852 - Ignition source  
1 (Match flame equivalent)  
EN 1021-1 (Cigarette)  
EN 1021-2 (Match)  
EU Ecolabel

---

*VESPER (available in 8 colours)*



**COMPOSITION**

10% CO, 40% LI, 10% PA,  
10% PES, 30% CV

**ABRASION**

40000 martindale  
lightfastness 5  
pilling 4

**FIRE RESISTANCE**

EN 1021-1 (Cigarette)  
EN 1021-2 (Match)  
TB 117-2013